

American Association of Public Health Dentistry— UIC Student Chapter and Goldie's Place

Dr. Caswell Evans, Faculty Advisor, Goldie's Place, Brian Homann, AAPHDsc resident, UIC College of Dentistry and Rana Shahi, AAPHD, Goldie's Clinic Director

American Association of Public Health Dentistry – UIC Student Chapter and Goldie's Place

Faculty Advisor-
Dr. Caswell Evans DDS MPH
casevans@uic.edu

AAPHDsc President
Brian Homann - bhomann2@uic.edu

AAPHD/Goldie's Clinic Director
Rana Shahi - rana7281@gmail.com

What is AAPHDsc?

- A UIC service organization whose goal is to promote programs and services to the underserved people of Chicago and to provide educational programs to the UIC community.
- The vision of AAPHDsc is to develop, operate and maintain a student-run dental clinic which provides dental care to the homeless community of Chicago and to foster school-wide participation in this endeavor.

What is Goldie's Place

Support center located at 5705 North Lincoln Ave.

Mission: To assist adults who are homeless to become self-sufficient by providing life skills, education and support, based on our belief in human potential and broad spiritual principles



Services offered at Goldie's Place

- Employment assistance program
-Job search techniques, application preparation, interview and presentation skills, transportation to interviews, workforce development training
- Clothes Closet
- Dental Clinic including the nation's first student run dental clinic

Who gets help at Goldie's Place?

Participants are referred to Goldie's Place by homeless agencies in the Chicago-land area with which Goldie's is associated

58% of participants have substance abuse issues and/or ex-offender status

74% African American

Average age is 31-50 years old

Slightly more than 50% of population is Female

What do you think of when you hear the word homeless?



American Association of Public Health Dentistry— UIC Student Chapter and Goldie's Place (continued)

Dr. Caswell Evans, Faculty Advisor, Goldie's Place, Brian Homann, AAPHDsc resident, UIC College of Dentistry and Rana Shahi, AAPHD, Goldie's Clinic Director

Mr. Taylor



- Lives on the Southside of Chicago since the 1950's
- Kicked out of high school
- Homeless and without dentures for 10 years
- Worked off/on as cook at IHOP, Gateway Treatment Center, and Church's kitchens
- Goldie's helped him get a job interview



Where We Were Summer 2009

- Student Clinic had been in operation for 6 months
- 24 student members
- 3 non-functional chairs
- Provided only directs, extractions, SRPs, and prohys
- Provided \$5,000 in treatment



Where We Are Now

- 134 members (over 60 active Goldie's Place Participants)
- 4 fully operational chairs
- Provide all aspects of tx: SRPs, Directs, Exts, RCTs, Flippers, Partial and Full Dentures
- Digital radiographs

Where We Are Now, continued

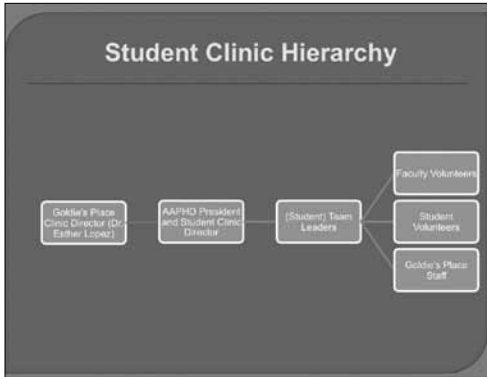
- Brought in hygiene students to provide treatment (which led to a Goldie's-hygiene affiliation)
- Total of over \$50,000 in treatment
- Featured in the UIC Flame, ADA New Dentist News, and Word of Mouth
- Now have 5 labs donating lab work to Goldie's Place

Who helps during a Goldie's Student Session?

- D1- Front Desk, Sterilization
- D2- Assistant
- D3- Assistant, Provider, Laboratory
- D4- Assistant, Provider, Laboratory
- (Student) Team Leader
- Faculty Instructor
- Goldie's Place Representative

American Association of Public Health Dentistry— UIC Student Chapter and Goldie's Place (continued)

Dr. Caswell Evans, Faculty Advisor, Goldie's Place, Brian Homann, AAPHDsc resident, UIC College of Dentistry and Rana Shahi, AAPHD, Goldie's Clinic Director



Funding and Equipment

UIC College of Dentistry - loaned 3 operatory chairs, (4ops total) to AAPHDsc for Goldie's clinic

Henry Schein - 2008: \$18,075 in materials, supplies including dentrix software

Private Dentist donations- Instruments and volunteer services, 15 general dentist volunteers, one oral surgeon, three hygienists, three assistants

Funding and Equipment, continued

- Goldie's Angel Donor
- Student Contributions- (obtaining supplies and cases)
- Volunteer architect and contractor/engineer

Funding and Equipment, continued

- Dental supply companies- Midway Dental Supply, Hu-Friedy, Premier Dental, Disco Dental Products, SDI, Work Safe Solutions, SteriCycle
- Dental Labs- Depot Dental, Med Perform, Merrimac Lab, Ancer Dental Lab, Cornerstone Dental



**American Association of Public Health Dentistry—
UIC Student Chapter and Goldie's Place (continued)**

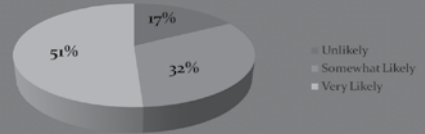
Dr. Caswell Evans, Faculty Advisor, Goldie's Place, Brian Homann, AAPHDsc resident, UIC College of Dentistry and Rana Shahi, AAPHD, Goldie's Clinic Director

Grants

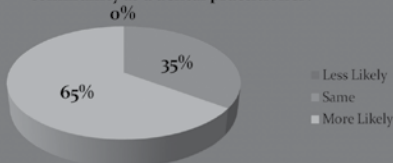
- Grant Health Foundation - \$40,000
- Washington Square - \$25,630
- Chicago Dental Society - \$2,000
- Shaker Foundation - \$19,507
- Henry Schein (Henry Schein Cares Program) - \$6,214
- Surplus Funds- \$34,580 in materials and supplies
- The Young Leadership Fund - \$4,800 – purchased lab equipment, RPD materials, and Emergency Equipment
- Visiting Nurse Association (VNA)
 - \$20,000
- UIC College of Dentistry
 - \$10,434 in supplies, materials, and goods

N=52 students that had volunteered at Goldie's Place

Prior to volunteering at Goldie's, how likely were you to provide dental care to the underserved community as a dental practitioner?



After volunteering at Goldie's, how likely are you to provide dental care to the underserved community as a dental practitioner?



Thank You

• Additional Comments

Caswell A. Evans, DDS, MPH
Associate Dean for Prevention and Public Health Sciences
University of Illinois at Chicago
College of Dentistry