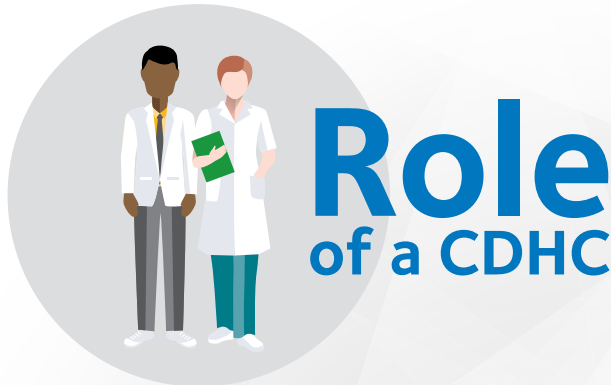


# The Value of Community Dental Health Coordinators

Based on a 6-month pilot of CDHCs in four Federally Qualified Health Centers (FQHCs)



A Community Dental Health Coordinator (CDHC) acts as a bridge between the community and clinical care with a working knowledge of dental disease processes, the dental delivery system and disease prevention strategies.

## Connecting to Care –



6,000

**12 CDHCs** connected over **6,000 patients** to comprehensive dental care.



184

In Virginia, **1 CDHC** connected **184 children** aged 0–3 to comprehensive dental care.



Integrating CDHCs into clinical workflow improves patient outcomes.



19%

At **1 FQHC** in New Jersey, CDHCs **increased the overall HPV vaccine rates by 19%**.