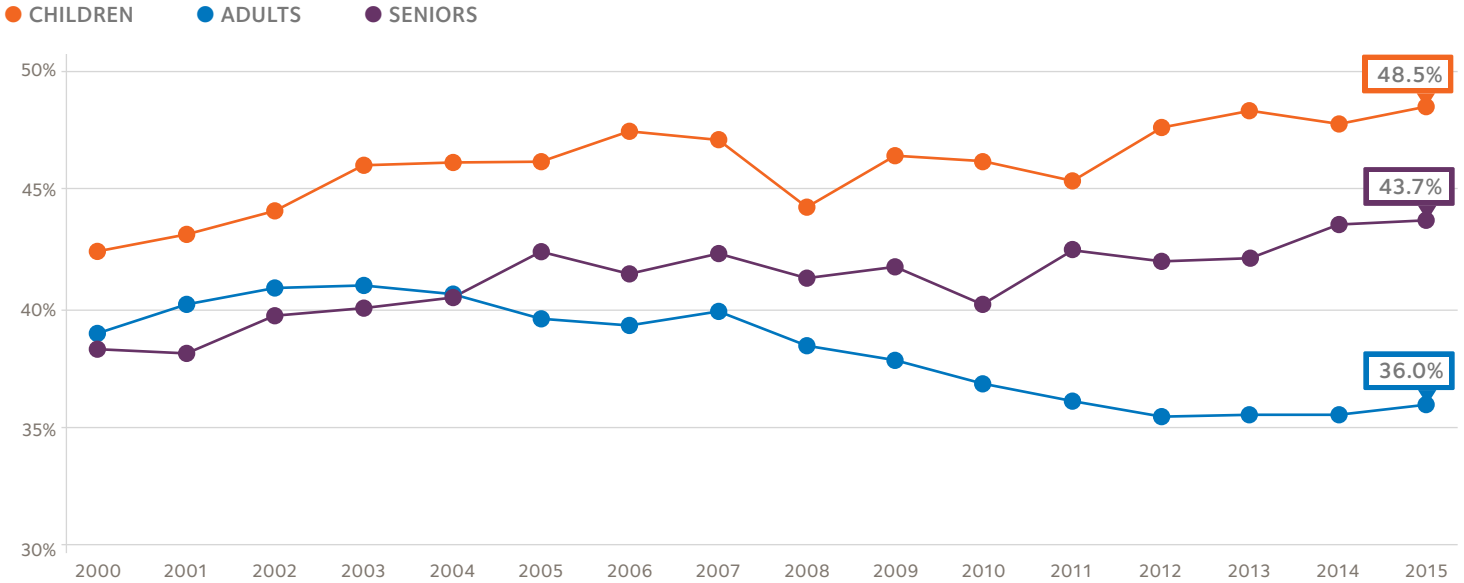


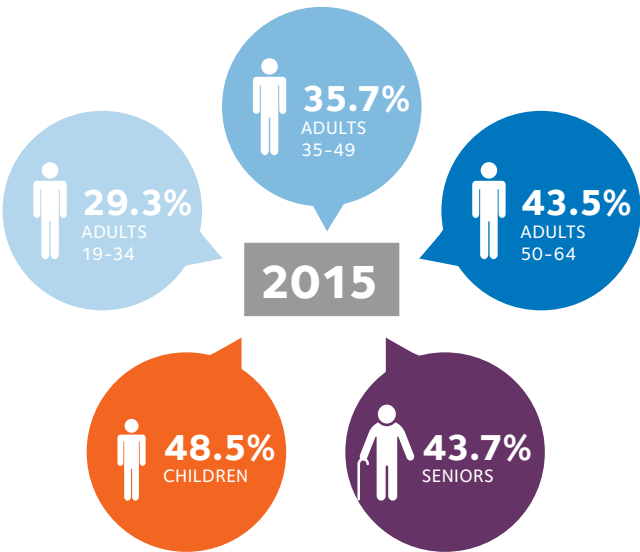
Dental Care Utilization in the U.S.

PERCENTAGE OF POPULATION WHO VISITED A GENERAL DENTIST IN THE PAST 12 MONTHS

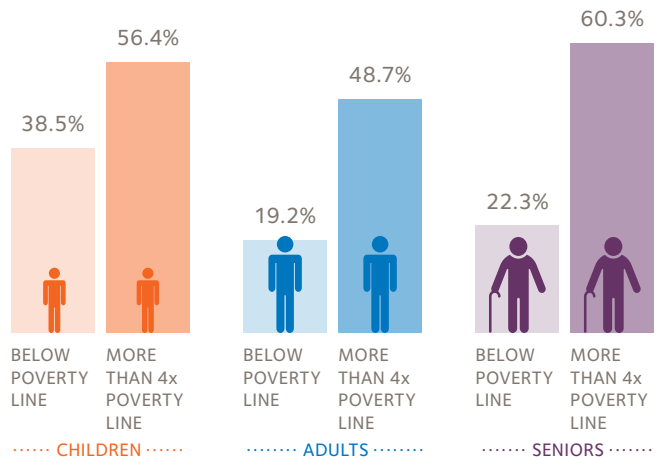


RECENT INCREASES IN DENTAL CARE USE among children have been driven mainly by gains among children covered by Medicaid and CHIP.

THE GAP IN DENTAL CARE USE between low-income and high-income children has narrowed in recent years. For seniors, it has widened.



PERCENTAGE OF POPULATION WHO VISITED A GENERAL DENTIST IN THE PAST 12 MONTHS – BY POVERTY LEVEL



Source/Notes: Based on Health Policy Institute analysis of 2000–2015 Medical Expenditure Panel Survey data. This is an update of previously published research. Detailed methodology is available at <http://bit.ly/2xsLtoY>. Changes from 2014 to 2015 by age group were not statistically significant. Children are ages 2 to 18, adults are ages 19 to 64 and seniors are ages 65 and older. CHIP is the Children's Health Insurance Program.