

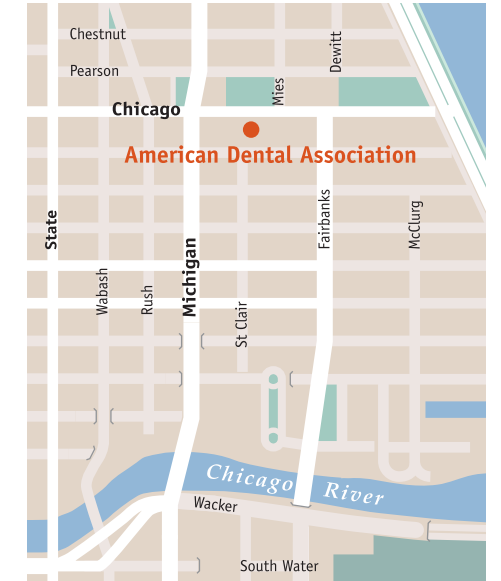


# Meetings & Events Facilities



## ADA Conference & Meeting Center

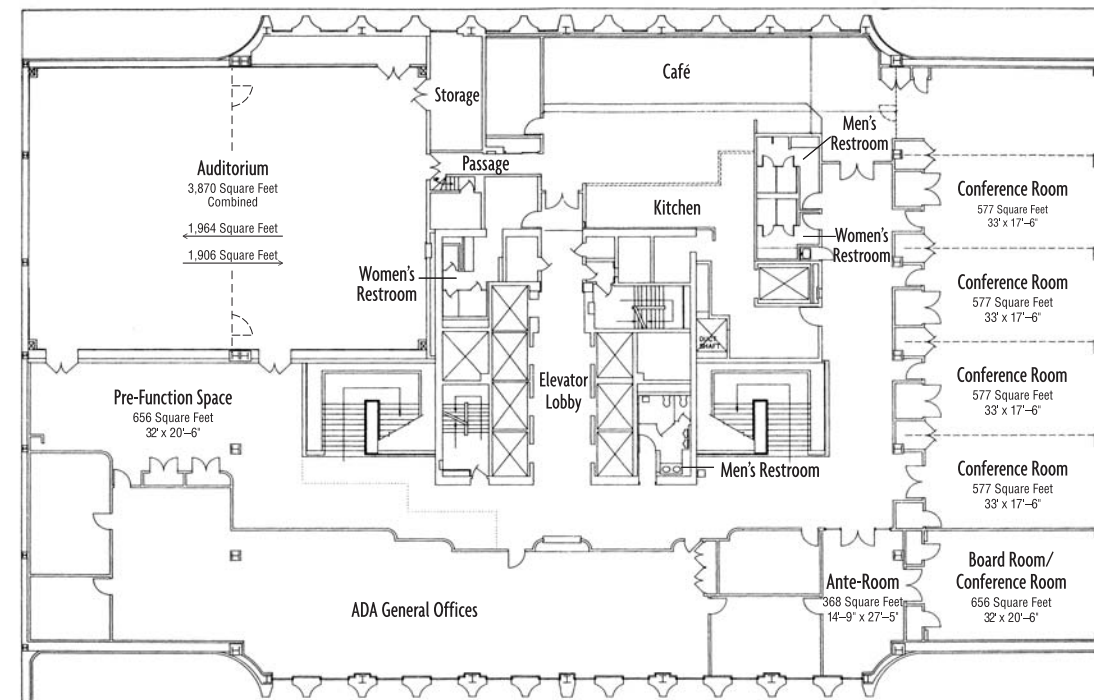
Located in the heart of the Magnificent Mile, the American Dental Association building is one half block from one of the world's finest shopping streets—Chicago's own Michigan Avenue. The American Dental Association is accessible by all forms of public transportation, including 24-hour CTA bus routes, the subway, and elevated trains. In addition, there are several parking facilities within walking distance of the building. Our facilities combine technological services and a wide range of amenities to ensure that your event is a success.



## Services at-a-glance

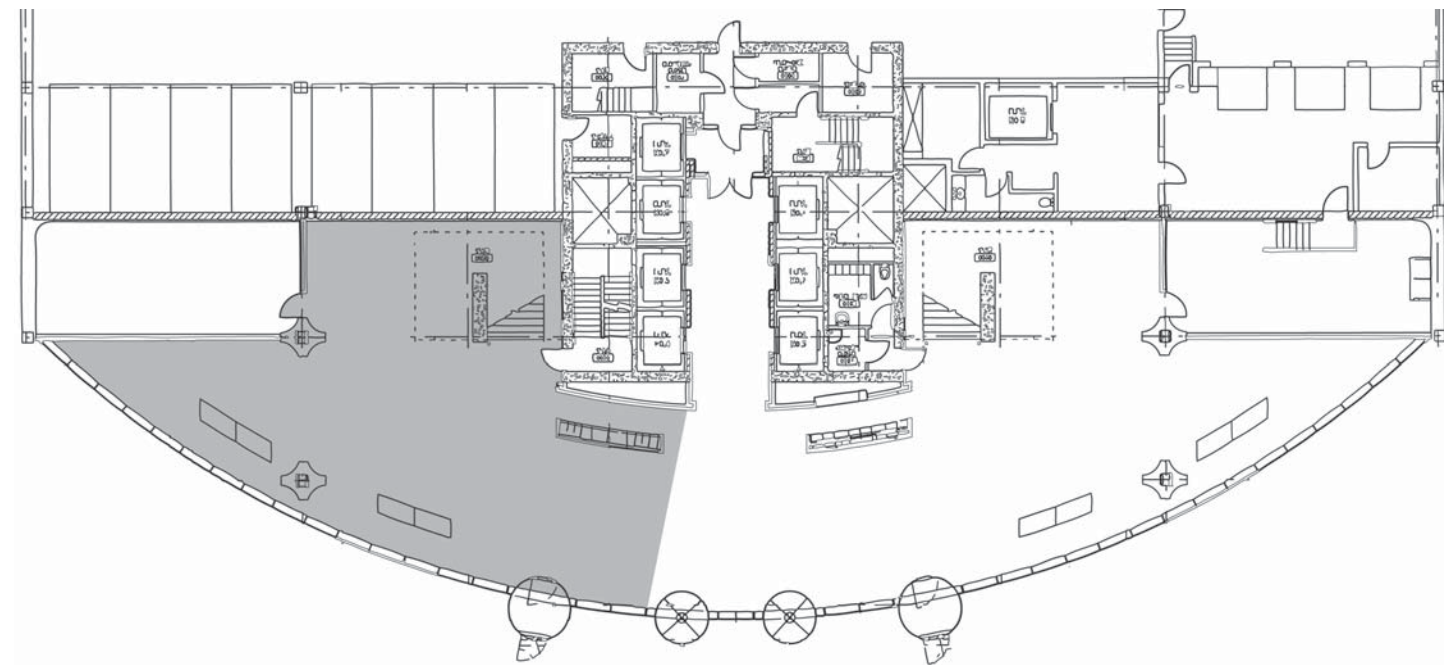
- State-of-the-art technological and audio visual capabilities
- On-site full service catering
- 24-hour building security
- Over 6,100 square feet of flexible meeting space
- Expert staff focused on your meeting goals

## 2nd Floor—Conference Center

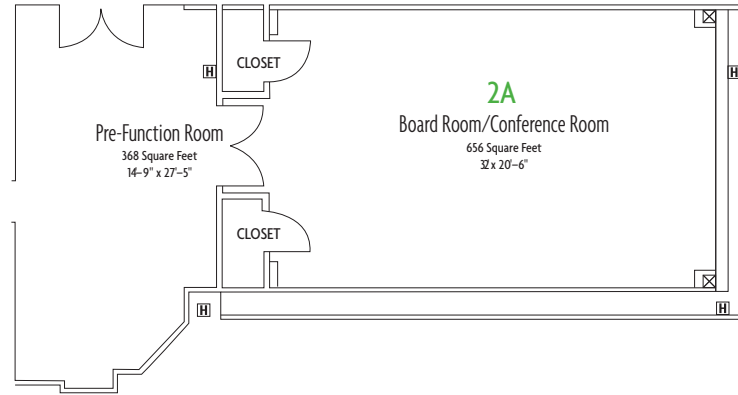




Main Entrance—Reception Area—East Lobby

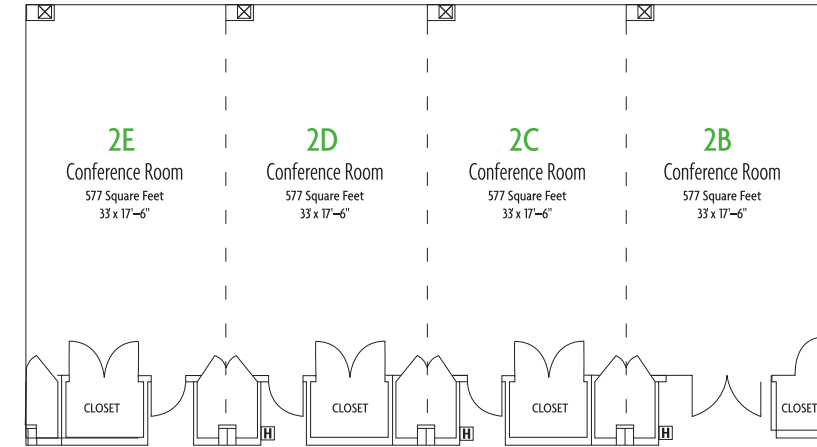


## Conference Room 2A



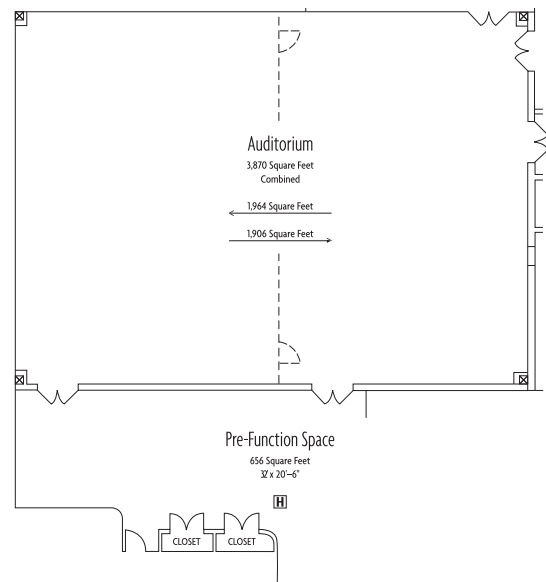
Room	Square Feet	Reception	Banquets	Theater	Conference	Classroom	Hollow Square	U-Shape	T-Shape
Room 2A	656	-	-	-	16	-	-	-	-

## Conference Rooms 2B-C-D-E

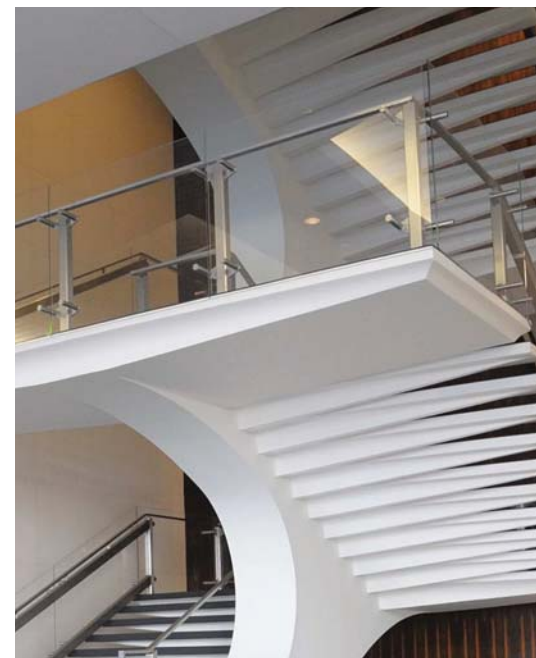
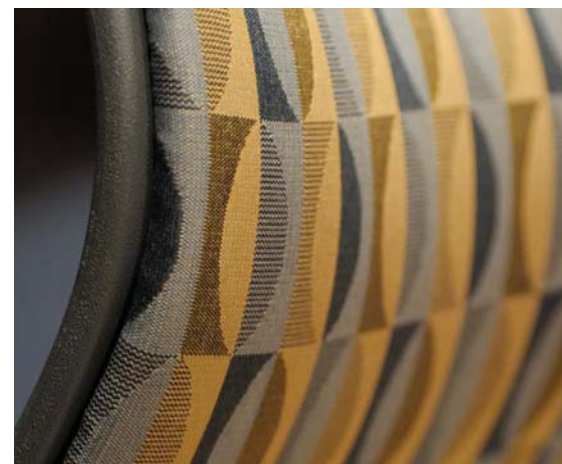


Room	Square Feet	Reception	Banquets	Theater	Conference	Classroom	Hollow Square	U-Shape	T-Shape
Room 2B	577	50	32	30	22	20	-	16	16
Room 2C	577	50	32	30	22	20	-	16	16
Room 2D	577	50	32	30	22	20	-	16	16
Room 2E	577	50	32	30	22	20	-	16	16
Room 2B-C-D-E	2,308	200	176	-	-	100	-	-	-

## Hillenbrand Auditorium



Room	Square Feet	Reception	Banquets	Theater	Conference	Classroom	Hollow Square	U-Shape	T-Shape
Auditorium*	3,870	350	200	400	-	240	-	-	-
Half Auditorium	1,935	160	150	-	-	100	-	-	-



**ADA** American  
Dental  
Association®

America's leading  
advocate for oral health

211 East Chicago Avenue  
Chicago, Illinois 60611-2616

T 312.440.2382  
F 312.440.2707  
ADA.org

---