

Tips on Preparing for the Dental Admission Test (DAT)

Dr. Kathleen J. Hinshaw
Sr. Manager, Test Administration
Department of Testing Services

ADEA Predental Student Virtual Fair
April 29-30, 2014



DAT Program Purpose

DAT program in operation (nationally) since 1950. Detailed history in User's Manual: http://www.ada.org/~media/ADA/Education%20and%20Careers/Files/dat_users_manual.ashx.

Purpose: Designed to measure general academic ability, comprehension of scientific information, and perceptual ability.

Foundation upon which the test is built; drives the:

- Test content
- Administration policies and procedures
- Scoring, Reporting, and Interpretation of Scores

Validity studies show that test scores (in conjunction with academic records) are useful in predicting performance in dental school.

All dental schools require examinees to participate in the DAT Program, but test results are only one consideration in evaluating examinee admission potential.



DAT Program Operating Principles

- Set/maintain standards for profession.
- Valid, reliable, and credible test.
- Complies with *Standards for Educational and Psychological Testing*; incorporates industry best practices.
- Cost effective.
- Uphold security and protection of content/intellectual property.
- Examinees given reasonable opportunity to demonstrate ability/achievement. Opportunity is fair and equitable.



Testing Format

- Computer-based, administered by Prometric at test centers in the United States and territories (Guam, Puerto Rico, and the Virgin Islands).

DAT Testing Schedule	
<i>Optional Tutorial</i>	<i>15 minutes</i>
Survey of Natural Sciences	90 minutes
Perceptual Ability Test	60 minutes
<i>Optional Break</i>	<i>15 minutes</i>
Reading Comprehension Test	60 minutes
Quantitative Reasoning Test	45 minutes
<i>Optional Post Test Survey</i>	<i>15 minutes</i>
Total time	5 hours

Test Content

Sequence of 4 Tests

Test	Number of Questions (multiple choice)
Survey of the Natural Sciences	100
Perceptual Ability Test	90
Reading Comprehension	50
Quantitative Reasoning	40
Total	280

**DAT Guide (page 5) contains detailed
Test Specifications.**

Changes to Test Content

Critical Thinking Skills

In order to enhance testing of critical thinking skills, the Quantitative Reasoning Test (QRT) specifications have been revised to eliminate the sections for numerical calculations, conversions, geometry, and trigonometry. Items will be added in the following areas: data analysis, interpretation, and sufficiency; quantitative comparison; and probability and statistics. **These changes will be implemented no sooner than 2015.**

Biology

Biology survey courses have shifted to a systems approach (i.e., focusing on complex interactions within biological systems). **Biology test specifications are being adjusted accordingly in 2015.**

Additional information posted on the website: www.ada.org/dat.aspx.



Test Administration and Fees

- Electronic process; 6 month eligibility.
- Monitor website for upcoming enhancements.
- Administered nationwide at Prometric Test Centers, any business day.
- Approximately 284 professional level testing centers in North America with 5,243 available seats.
- Secure test environment. Biometric check-in. Video monitoring.

<https://www.prometric.com/en-us/for-test-takers/prepare-for-test-day/pages/what-to-expect.aspx>

2014 Fees	
DAT (Includes unofficial personal report, official reporting to schools selected on application, and pre-health advisor report if selected)	\$385
Additional score report (per entity)	\$33
Audit Request	\$65



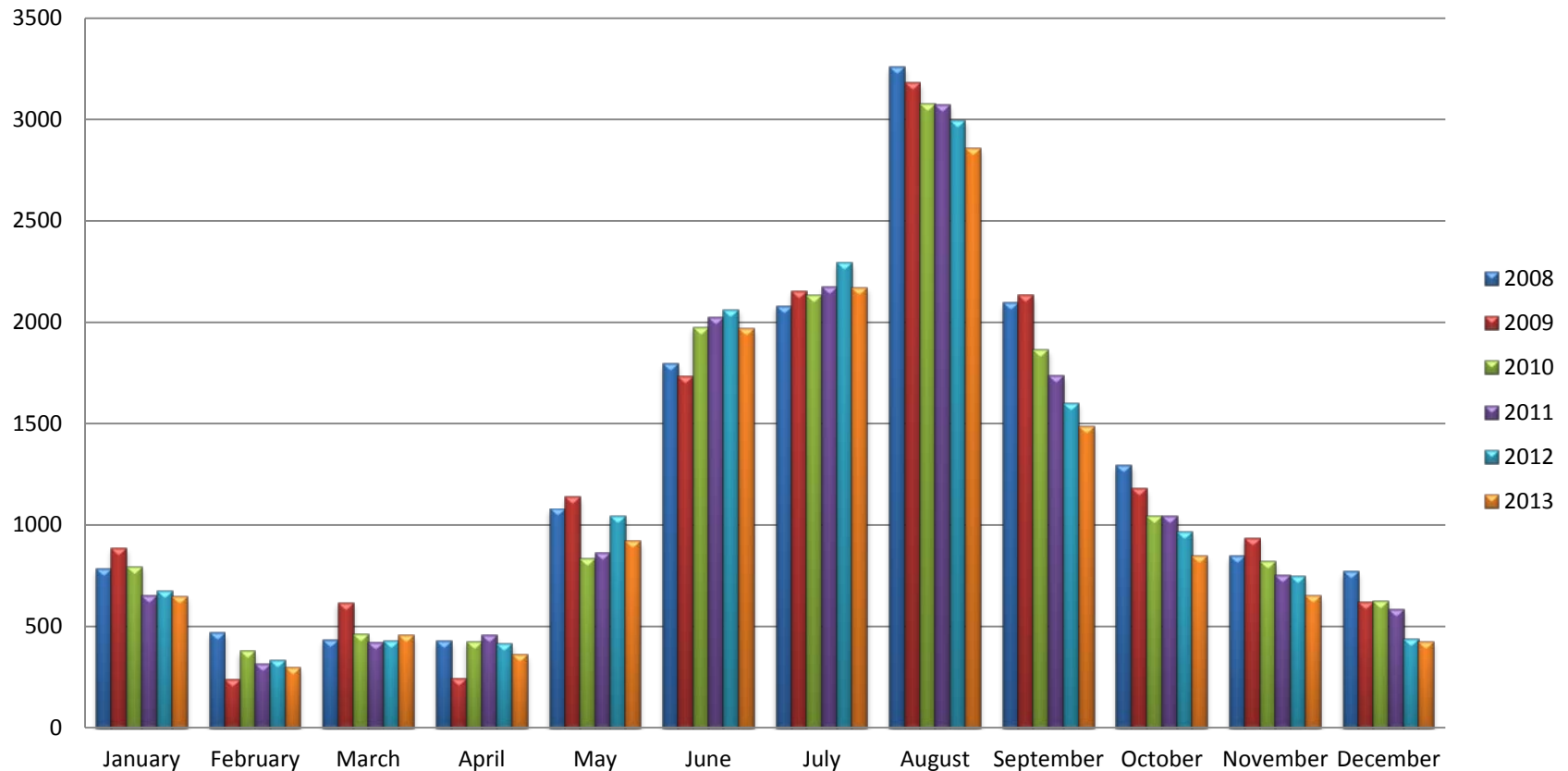
Testing Checklist

This checklist is a summary of issues that create problems on testing day.

<p>Bring two original, current (not expired) IDs to testing center:</p> <ul style="list-style-type: none">• 1 government issued ID with photograph and signature (driver license or passport)• 1 ID with signature (social security card, credit card, debit card, library card)	<p>Follow the instructions of the test administrator and the testing center rules.</p> <ul style="list-style-type: none">• Store personal items in the testing center locker and not access during testing or unscheduled break.• No cell phone use during testing or unscheduled break.• Check pockets to ensure they are empty.
<p>Name on IDs match name submitted on application <u>exactly.</u></p> <ul style="list-style-type: none">• <u>Match:</u> Joseph Anthony Smith and Joseph A. Smith• <u>Non-match:</u> Joseph Anthony Smith and Joseph Smith-Johnson (hyphenated last names)	<p>Problem with testing conditions; notify the test administrator <u>immediately.</u></p> <p>Concerns not resolved must be submitted in writing to DTS within 5 business days of testing appointment.</p>



DAT Monthly Testing Volumes



Testing Accommodations

Accommodations are granted in compliance with the Americans with Disabilities Act upon submission of the following:

Testing Accommodation Request Form describes disorder/disability and need for accommodations.

Accommodations must align with the functional limitation (behavioral manifestation of disability that impedes individual's ability to function) so accommodation is applicable to impairment.

Current evaluation report (within the past five years) from licensed professional.

Must be on official letterhead with professional's credentials, signature, address, and telephone number with examinee's name, date of birth, and date of evaluation. The report must include:

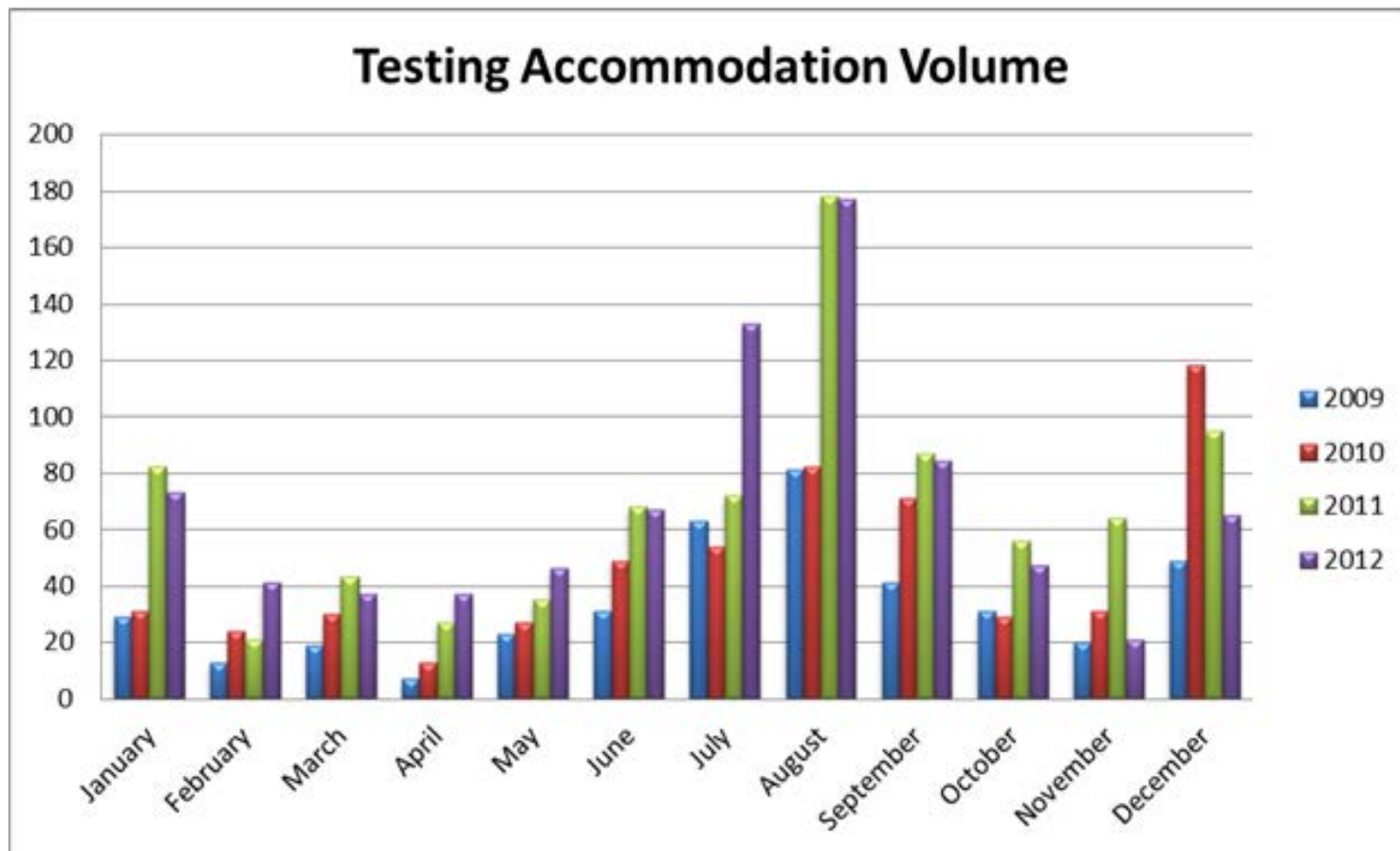
- **Diagnostic procedures/tests** administered. Diagnostic methods should be appropriate to disorder and aligned with current professional protocol.
- **Results of diagnostic procedures/tests** and comprehensive interpretation of results.
- **Diagnosis of disorder/disability**, with an accompanying description of limitations.
- **Recommendations for specific accommodations** and how they will reduce the impact of functional limitation.

Documentation of any previous accommodations provided by educational institutions/testing agencies.

If no prior accommodations were provided, the licensed professional should include explanation as to why no accommodations were given in the past and why accommodations are needed now.

Testing Accommodation Volume

(data is inclusive of 4 out of 5 testing programs)



Score Reports/Scoring

Score Reports	Scoring
Unofficial score report provided upon completion of test at test center.	Based on the number of correct answers provided by the examinee. Number of correct answers (raw scores) converted to scale scores. Equating process adjusts for differences in difficulty among test forms and permits comparison of scores over time.
Administrations are monitored for irregularities. Penalties are implemented for misconduct and cheating. (see the DAT Guide, Testing Irregularities and Appeals)	DAT Committee reviews examinee performance to understand trends and potential changes.
Audit procedures conducted and official scores reported (electronically) 3 to 4 weeks after testing appointment.	Detailed score analysis provided in DAT User's Manual. (see "Resources" on Website)

Retesting

90-day wait required between retests.

Three or more testing attempts, must apply for permission to retest and provide evidence of intent to apply to dental school. Acceptable evidence includes:

- ADEA AADSAS application **or**
- Rejection letter from a dental school **or**
- Letter from dental school admission officer/pre-health advisor.

Reschedule Policy

To improve rescheduling process and permit last minute rescheduling, the following reschedule policy has been adopted.

Contact Prometric directly and pay a fee directly to Prometric.

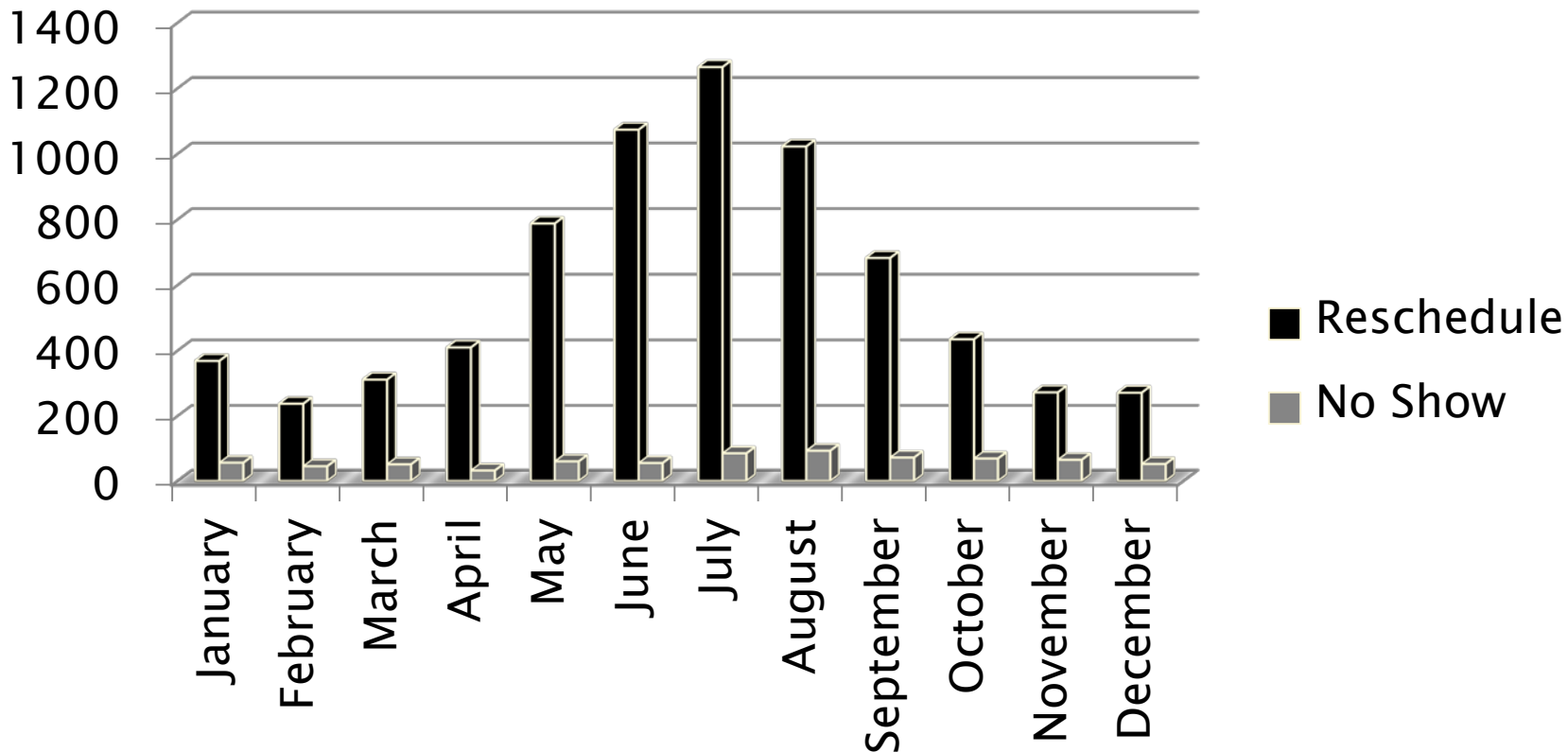
Contractual agreements require DTS payment for no-show appointments.

Fee Schedule

(Saturday and Sunday are NOT business days)

\$100 the day before to 5 business days prior to the testing appointment	\$60 6 to 30 business days prior to the testing appointment	\$25 31+ business days prior to the testing appointment
---	--	--

Reschedule and No Show Volume 2013



Total:	Rescheduled appointments	7,142
	No show appointments	735



Examinee Satisfaction Survey

Survey Results: Prometric

	N	Very Satisfied	Satisfied	Dissatisfied
Appointment date	1334	45.8	49.6	4.6
Promptness in seating them	1327	68.3	29.1	2.6
Helpfulness of test center staff	1320	69.6	28.7	1.7
Performance of testing system	1312	38.6	50.2	11.2
Test center total testing environment	1311	52.2	44.6	3.2
Total experience of taking DAT	1305	44.6	51.9	3.5

DAT Resources

What?	Where?
Counsel with your Pre-health Advisor	Your academic institution and review admission requirements for proposed dental school.
Guide	http://www.ada.org/sections/educationAndCareers/pdfs/dat_examinee_guide.pdf
FAQs	http://www.ada.org/sections/educationAndCareers/pdfs/dat_faq.pdf
Checklist	http://www.ada.org/sections/educationAndCareers/pdfs/dat_checklist.pdf
Application Instructions	http://www.ada.org/dat
Testing Accommodations	http://www.ada.org/~media/ADA/Education%20and%20Careers/Files/dat_accommodation_request.ashx
Tutorial	https://www.prometric.com/ClientFiles/ada/DAT/index.htm
Website	http://www.ada.org/dat.aspx http://www.ada.org/3746.aspx
Practice Test (web-based or paper-based)	http://www.ada.org/~media/ADA/Education%20and%20Careers/Files/2015_dat_sample_test_order_form.ashx https://www.prometric.com/en-us/clients/ADA/Pages/landing.aspx
Prometric FAQs	https://www.prometric.com/en-us/for-test-takers/Prepare-for-Test-Day/frequently-asked-questions/Pages/default.aspx
What to Expect on Test Day	https://www.prometric.com/en-us/for-test-takers/Prepare-for-Test-Day/Pages/what-to-expect.aspx

Website

<http://www.ada.org/dat.aspx>

Please note: updates to the website are scheduled for March/April. The appearance may be different at the time of this presentation.

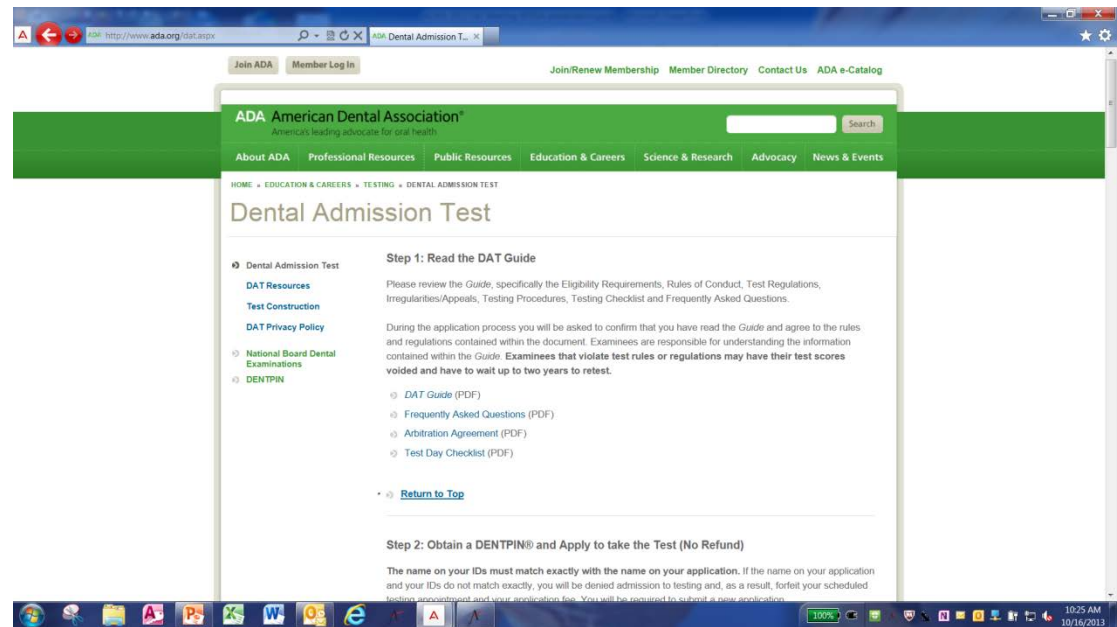
Step 1: Read the DAT Guide

Step 2: Obtain a DENTPIN® and Apply to take the Test

Step 3: Schedule a Time to Take the Test

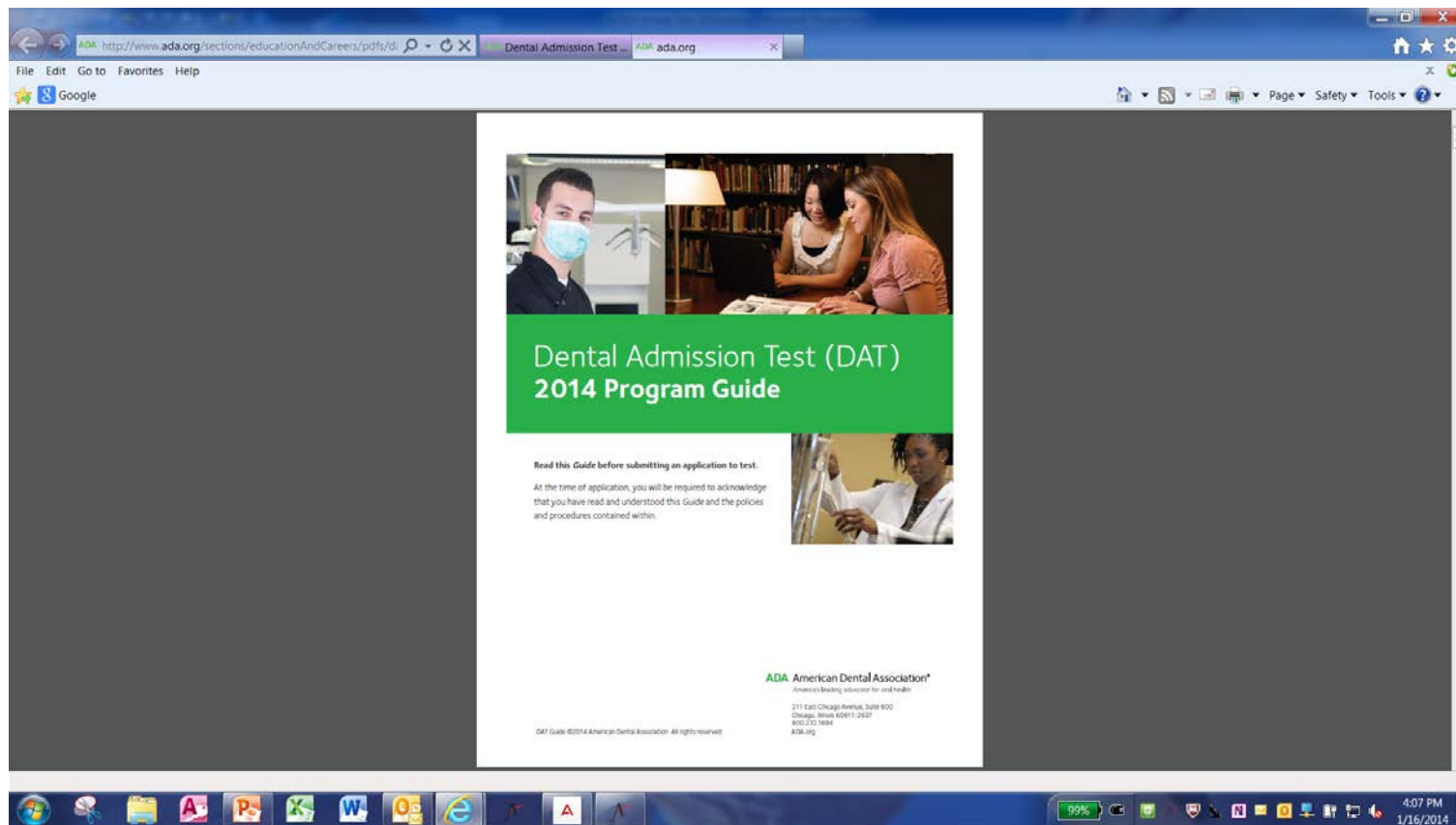
Step 4: Take the Test at a Prometric Test Center

Step 5: Score Reports



DAT Guide

http://www.ada.org/sections/educationAndCareers/pdfs/dat_examinee_guide.pdf



Additional Resources

<http://www.ada.org/3746.aspx>

- Newsletters
- Meeting Presentations
- Validity Study
- User's Manual (detailed scoring information)
- Examinee Information
- Reference Texts

The screenshot displays the ADA American Dental Association website. The browser address bar shows the URL <http://www.ada.org/3746.aspx>. The website header includes the ADA logo and the tagline "America's leading advocate for oral health". The navigation menu contains links for "About ADA", "Professional Resources", "Public Resources", "Education & Careers", "Science & Research", "Advocacy", and "News & Events". The main content area is titled "DAT Resources" and features a breadcrumb trail: "HOME > EDUCATION & CAREERS > TESTING > DENTAL ADMISSION TEST > DAT RESOURCES". The page is organized into three columns: "DAT Resources" (with links for "Test Construction" and "DAT Privacy Policy"), "DAT Newsletters" (with links for "Volume 4, Number 1 (PDF)", "Volume 3, Number 1 (PDF)", "Volume 2, Number 2 (PDF)", "Volume 2, Number 1 (PDF)", and "Volume 1 (PDF)"), and "Additional DAT Resources" (with links for "DAT Update: ADEA Presentation 2012 (PDF)", "DAT Update: NAAHP Presentation (PDF)", "2012 Validity Study (PDF)", "DAT User's Manual (Facts & Figures) (PDF)", "Examinee Information (PDF)", "Reference Texts (PDF)", and "DAT Arbitration Agreement (PDF)"). The footer contains the ADA logo, contact information (211 East Chicago Ave., Chicago, IL 60611-2678, 312-440-2500), and a copyright notice (Copyright © 1985-2013 American Dental Association). The Windows taskbar at the bottom shows the system tray with the date and time (10:30 AM, 10/16/2013).





Contact Information

Dr. Kathy Hinshaw will be available to answer your questions from 1:00 p.m. to 3:00 p.m. (EST) in the *Presenter Q & A Chat Room*.

Dental Admission Testing Program

211 E. Chicago Avenue, Suite 600

Chicago, Illinois 60611

800-232-1694

datexam@ada.org

Kathleen J. Hinshaw, L.D.H., Ed.D.

Senior Manager, Test Administration